



# BALBOA PARK COMMITTEE OF 100

Working to preserve Balboa Park's historic architecture, gardens and public spaces since 1967

1649 El Prado, Suite 2 • San Diego CA 92101

[WWW.BALBOAPARKCOMMITTEEOF100.ORG](http://WWW.BALBOAPARKCOMMITTEEOF100.ORG)

## For Immediate Release

### **SD HIGH SCHOOL REBUILDING CAN BENEFIT BALBOA PARK AND ENVIRONS, NEW REPORT PROMISES**

(Feb. 12, 2024) -- The reconstruction of San Diego High School can reconnect it to Balboa Park, downtown, surrounding neighborhoods and the region, a new report promises, with both physical and programmatic elements.

The Balboa Park-San Diego Connections Working Group, formed by Parks and Recreation Director Andy Field at the request of the City Council, issued its draft final report for input from stakeholder groups and the general public before presenting it to the council.

The 51-page report is available online at [balboaparkcommitteeof100.org](http://balboaparkcommitteeof100.org). C100, the Park's oldest support group, organized the working group and prepared the report. "For decades there's been concern about a school occupying parkland and goal has been to either remove the school or make it truly part of the park," said long-time city planner and architect Mike Stepner, the group's chair. "We hope these recommendations spur action by the city, the school district and the wider community."

Among the group's recommendations:

- Complement the high school's current rebuilding program with the continuing expansion at City College, located immediately south;
- Add public improvements along Park Boulevard, Russ Boulevard and 14<sup>th</sup> Street to create a park-like setting for the school; enhance access via the traffic and pedestrian bridges over Interstate 5; and support joint public use of a planned aquatic center, performing arts center, a rebuilt Balboa Stadium and other facilities.
- Instigate programmatic changes in "social infrastructure" to tie the school and other nearby educational institutions to the park and job centers; and,
- Adopt reforms like park project design review, governance and funding.

The report incorporates the city's Development Services-Urban Division's interactive "story map" that illustrates how downtown improvements can be linked by "John Nolen Parkway." Park Boulevard and other main streets would be rebranded to honor the early 20-century city planner who wrote San Diego's first master plan in 1908 and proposed a ceremonial "paseo" between San Diego's two great features, the San Diego Bay and Balboa Park.



# BALBOA PARK COMMITTEE OF 100

Working to preserve Balboa Park's historic architecture, gardens and public spaces since 1967

1649 El Prado, Suite 2 • San Diego CA 92101

[WWW.BALBOAPARKCOMMITTEE100.ORG](http://WWW.BALBOAPARKCOMMITTEE100.ORG)

Three parallel initiatives are also acknowledged: the World Design Capital 2024/San Diego-Tijuana, the Burnham Center for Community Advancement's white paper on reforming Balboa Park and the 50th anniversary of the "Temporary Paradise?" report that laid out an environmentally-minded future for the region.

"All things are connected," Stepner said. "Instead of approaching projects and programs one at a time, we have an opportunity to leverage improvements in a planned, comprehensive way and, in effect, 'grow' the park beyond its legal boundaries."

The school-park study project was launched after the City Council approved a 99-year lease for the school in 2021 and asked how the larger community could benefit from the new agreement.

The many recommendations are intended to restore the park-school's historic physical connection and strengthen programmatic links as well, Stepner said.

The all-volunteer Balboa Park Committee of 100 has championed historic preservation and restoration projects for more than 50 years—most recently the San Diego Automotive Museum, and C100 acts in an advocacy role as the park's "conscience" by promoting interest in park history and taking positions on key policy and land-use decisions.

# # #

## CONTACTS:

**WG Report: Mike Stepner, Chair | 619-988-2773 | [stepner2@gmail.com](mailto:stepner2@gmail.com)  
C100: Ross Porter, President | 858-789-0986 | [RossPorterster@gmail.com](mailto:RossPorterster@gmail.com)**



McCullough Landscape Architects, Rob Wellington Quigley Architects

# Balboa Park/San Diego High School Connections: *Connecting Neighbors: Parks, Schools, Jobs, Culture*

Balboa Park/San Diego High School  
Connections Working Group

Draft Final Report

February 2024



*"The people of San Diego will do well if they recognize today that the two great central recreation features of the city, now and always, are the City [Balboa] Park of 1,400 acres and the Bay Front and that the value of both will be increased many-fold if a suitable connecting link, parkway or boulevard, can be developed, bringing them into direct and pleasant relation." — John Nolen, 1908*

*"From her school Kate [Sessions] could see City Park, but it didn't look like one. It was where people grazed cattle and dumped garbage. Most San Diegans didn't think trees could ever grow there. Kate did."  
— H. Joseph Hopkins in Tree Lady (Kate Sessions)*

## **PURPOSE**

Propose ways to restore the historic connections between Balboa Park and San Diego High School, both physically and programmatically, and link both to City College, downtown, surrounding neighborhoods and the region.

## **EXECUTIVE SUMMARY**

When the City Council approved a 99-year lease for San Diego High School in 2021, Council members Joe LaCava and Stephen Whitburn asked that a group of stakeholders be formed to look at the opportunities presented by the lease to grow the park and improve East Village. Parks and Recreation Director Andy Field convened an ad hoc group of multiple stakeholders — the Balboa Park/San Diego High School Connections Working Group — to undertake this task. Included were representatives from the school and community college districts and park and community groups.

The Balboa Park Committee of 100, the park's oldest support group, assembled what was called the Balboa Park/San Diego High School Working Group to consider the possibilities.

*(See Appendix 1 for participants and stakeholders who were consulted.)*



Russ School, 1887, city clerk archives



Construction at SDHS, LaBella Photography, 2023, SDHS Alumni

Starting in early-2022, members reviewed planned projects and proposals from park stakeholder groups, the city and other interested parties that might complement the high school's whole-campus modernization facility plans. The review immediately expanded to encompass City College's plans as well and to find ways to connect the two campuses and the two of them to other educational and cultural institutions in Balboa Park and beyond. Meanwhile, the city's Development Services Department Urban Division prepared an interactive "story map" to show projects in the downtown area. *(See Appendix 3.)*

Besides projects already planned or under way, other proposals contemplate improvements along Park Boulevard; parking and circulation changes; joint use of high school and college facilities; internship and volunteer opportunities; curriculum alignment with park cultural institutions; park management reforms; and diversity, equity and inclusion considerations.

The Working Group commends these suggestions to the mayor and City Council, the school and college districts, park and community institutions, foundations, organizations and the general public and calls for action to be taken to bring as many as possible to reality. In the immediate future, they should be incorporated into the Balboa Park "Framework for the Future" initiative, particularly the Balboa Park prioritization study, and other relevant plans and policies.

The Working Group hopes this report will not be consigned to a shelf but instead will inspire all parties and San Diegans as a whole to improve San Diego's "crown jewel" and its namesake high school and integrate both into their surroundings to the benefit of all.

— *Michael Stepner, chair; René A. Smith, secretary; Roger Showley, editor*

## **BACKGROUND**

San Diego High School began as Russ School in 1882 in what was then called "City Park." It was rebuilt in 1907 and 1976 and is being modernized a third time over the next few years under the new 99-year lease that replaced the 50-year lease approved in 1974. Meanwhile, San Diego City College, just south of the park's boundaries and adjacent to SDHS, continues to expand into East Village and modernize its existing campus.

While SDHS lies within the park's 1868 boundaries, the construction of the Interstate 5 "S-Curve" in the 1960s severed the school from the rest of the park. Nevertheless, students at both the high school and college could benefit from closer physical and social ties to the many park institutions, and those institutions could use the energy and enthusiasm of the students as volunteers and activists. Similarly, surrounding businesses, other educational institutions and nearby residents could enjoy the park's many attractions if the routes to and from the park were more appealing and welcoming.

Numerous plans have been put forth over the years to better connect Balboa Park to its neighbors. The first came in John Nolen's *San Diego: A Comprehensive Plan for Its Improvement* of 1908. He called the park and bay San Diego's "two great recreation features" and proposed a "paseo" between Date and Elm streets, from the waterfront to Balboa Park, "bringing them into direct and pleasant relationship." Nolen revised his idea in his 1926 followup plan.

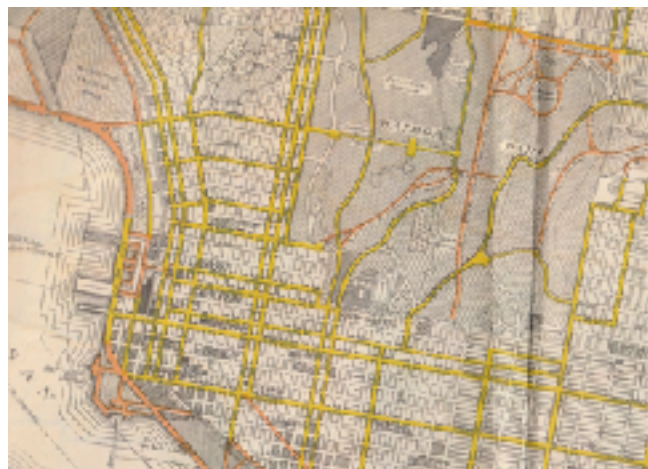
In the 1940s, city Planning Director Glenn Rick



Pre-freeway overview, ca 1960, PhotoRozelle



Nolen Plan, Paseo, 1908



Cabrillo Portal/Civic Center Plan, Nolen Plan, 1926

recast this idea as "Cedar Street Mall," starting at the County Administration Center, with a series of public buildings fronting a landscaped mall extending to the park. Voters failed to approve the plan and those buildings were scattered all over downtown and beyond.

During the 2010s, the I..DE.A. District (innovation, design, education and the arts) was unveiled as a way for the upper East Village area to attract companies and institutions. Makers Quarter also was launched at the northern edge of the district as a thematic approach to job creation. The district could be enlarged to include the park and rebranded "IDEA+" to unify this area of San Diego and catalyze joint efforts and thus unify the park and downtown once again.

Balboa Park faces ever-growing pressures to accommodate more visitors and activities. While its 1868 boundaries will likely never change, other means can be taken to "grow" the park and reach out to communities, such as Golden Hill, Sherman Heights, Barrio Logan and Southeastern San Diego, as well as the region at large.

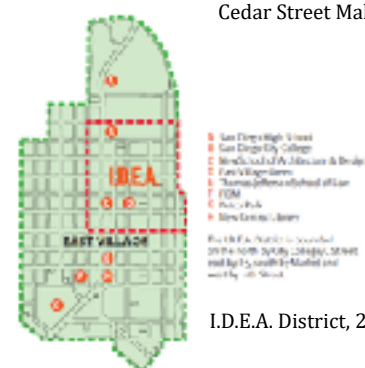
For example, the latest Downtown Community Plan calls for reconnecting the park and downtown by building "lids" over the freeway at various intersections. The plan's series of landscaped gateway streets, such as 14th Street, also would strengthen the physical connections to neighborhoods.

The Working Group reviewed planned improvements at SDHS and City College and discussed ways to leverage these upgrades to improve those connections. The Development Services' Urban Division incorporated those plans as well as other public improvements and visionary concepts into a "story map." (See *Appendix 3.*)

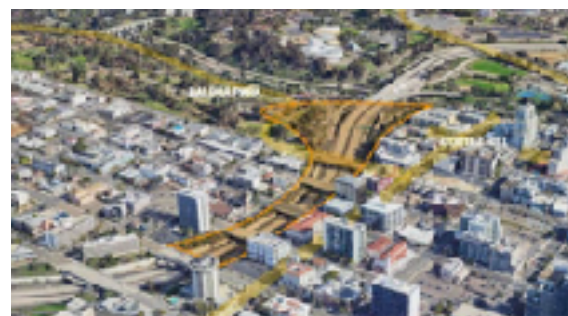
In this one visual display, one can imagine the synergy that could develop among existing, future and visionary components of the public realm. The resulting connections would further the development of an active and healthy urban environment. The story map shows clearly the importance of vibrant public spaces, which are critical to the future development and growth of the city's urban core.



Cedar Street Mall, 1945



I.D.E.A. District, 2013



'Lid' over I-5 'S-Curve,' 6th Ave. to Park Blvd., Development Services Urban Division story map; San Diego Commons

The Working Group's efforts take place as San Diego and Tijuana serve as the World Design Capital in 2024. This report represents one of the legacy projects that will come out of the year-long effort to elevate the binational region's design aspirations.

WDC2024 also coincides with the 50th anniversary of "Temporary Paradise?" This city-commissioned document looked into the future in 1974 and explored ways for San Diego County to grow in an environmentally responsible manner with improved connections across the Mexican border.

In short, this is a moment in time to implement high-level concepts that have been considered for more than a century and leave a legacy for future generations.

This report is divided into three parts — physical infrastructure, social infrastructure and governance/finance — and includes six appendices.

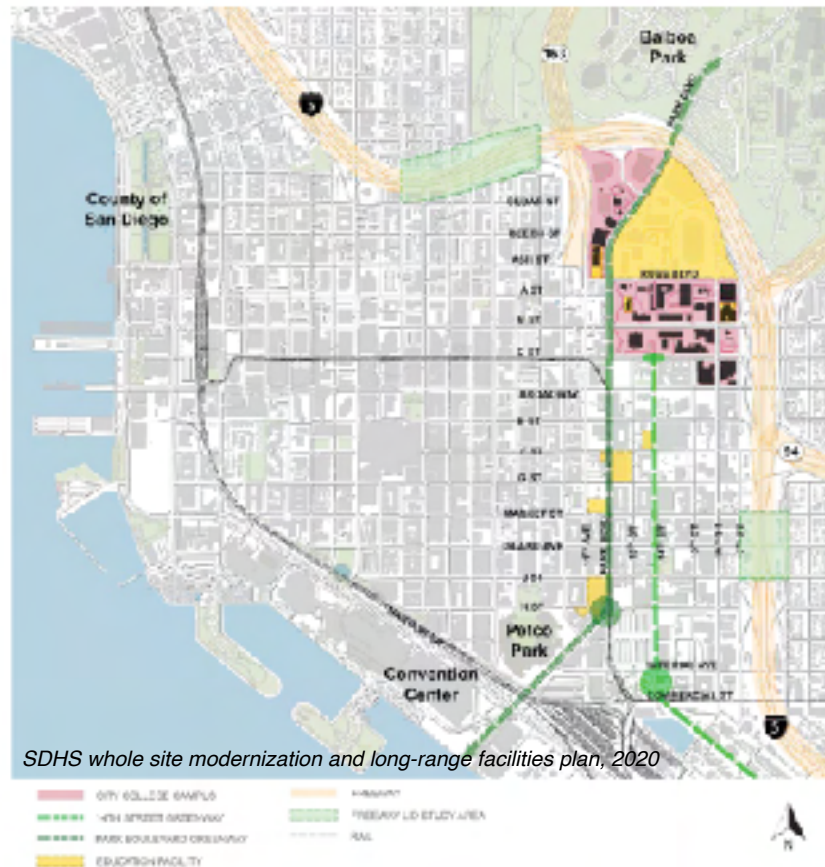




## Part 1: PHYSICAL INFRASTRUCTURE

### Campus Planning and Modernization

Two educational — San Diego High School and City College — organizations are undertaking approximately \$2 billion in building and other construction right next to each other. They are each committing to work with the city to provide the best possible “good neighbor” opportunities to residents while still maintaining campus security and other obligations.



#### • San Diego High School

Opened as Russ School in 1882, San Diego High School was rebuilt in 1907 and 1976. The 34-acre site comprises 11 buildings, 118 classrooms and eight portables for a student capacity of 2,916, and Balboa Stadium. Under the new 99-year lease adopted in 2021, work has begun on remodeling Building 100, the administration center. Other near-term improvements will improve existing open spaces and experiences for students, faculty, staff, and visitors.

Future phases contemplate a new theater, gymnasium, aquatic center and Balboa Stadium field house, along with upgrades of or replacements to existing buildings, parking lots and circulation patterns..

By building on current plans and proposals the following may be accomplished, so that:

- The athletic fields and future gym and theater are open for public use when school is not in session. The city and the school district have similar joint-use agreements at many of the district's schools.
- Balboa Stadium will be restored potentially including the historic peristyle and field house so that it can serve a broad range of events, both school- and park-related.
- Structured parking on or near Inspiration Point will be investigated as a joint-use park and school garage. Parking improvements may include one or more parking garages, usable by the public during off-hours.



**CAMPUS PLAN-  
FUTURE SCOPE**

1. P.B.C.
2. BASKETBALL & HANDBALL
3. PARKING STRUCTURE WITH TENNIS COURT ABOVE
4. NEW CLASSROOM BUILDING WITH CUSTODIAL AND FOOD SERVICES
5. AUDIUM GYM & FIELD HOUSE
6. AQUATIC CENTER

SDHS Whole Campus and Modernization and Long-range Facilities Master Plan, 2020

Remaining surface

parking lots could be replaced with environmentally minded permeable paving.

- The school site could be reconnected to the rest of the park and downtown. (See further discussion of the 14<sup>th</sup> Street Promenade and Interstate 5 lids below.)
- Additional landscaping can be planted along Park and Russ boulevards, in the parkways and on the medians.

## • City College

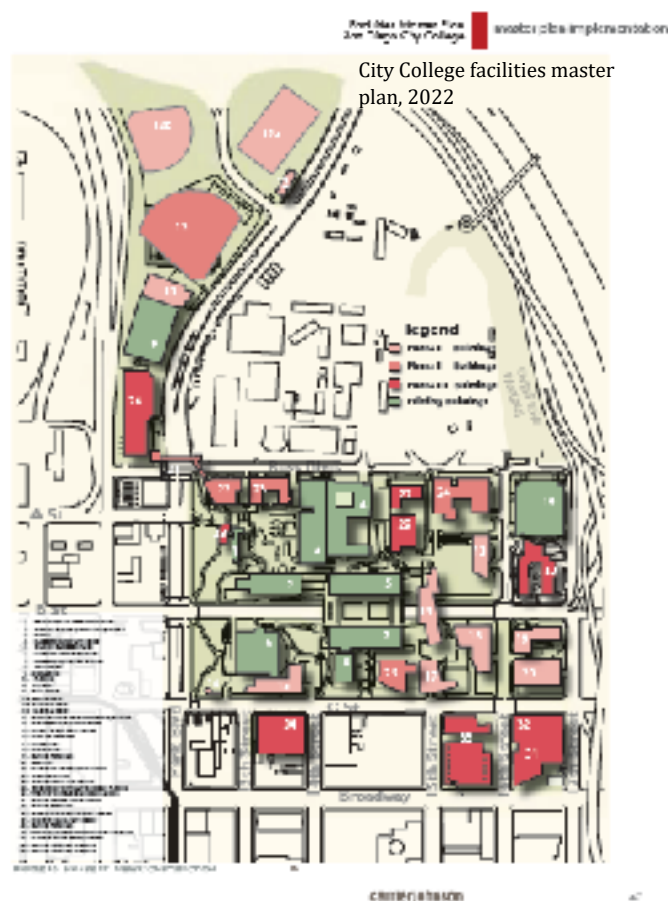
Established in 1914, the college was first part of the high school. From 1921 to 1946, it was part of what is now San Diego State University at its University Heights campus and then its Montezuma Mesa location. It returned to SDHS in 1946 before gaining its present site in 1953. City College occupies 60 acres and 40 buildings immediately south of SDHS and serves 16,000 students with the potential to grow to 25,000 in the next 50 years. From 2002 to 2019, 16 projects totaling \$459 million and funded by voter-approved bonds have modernized and enlarged the campus.

The latest master plan anticipates continued growth and construction as obsolete buildings are replaced and open spaces and athletic facilities are reconfigured. Much

thought is going into the public face of the college and connecting it to its surroundings, particularly East Village and Balboa Park.

Some proposed projects offer potential joint-use with the high school and after-hours use by the public, such as an aquatic center and new performing arts theater. They include:

- A reinterpreted Park Boulevard to emphasize a college or academic environment through signage, pedestrian bridges and landscaping on the sidewalks and in the medians northward across the bridge over Interstate 5, onramps to I-5 and State Route 163 and key entrances at B, C and 16th streets and Russ Boulevard. Some elements may require non-college funding.
- Placemaking concepts campus-wide at entrances in plazas and lawns and on Russ Boulevard, which would be landscaped to replace its current "fire lane personality."
- Demolishing eight buildings and six parking lots with 14 replacements totaling 700,000 square feet and 600 parking spaces on site or elsewhere on campus.
- The 282-seat Saville Theater would be rebuilt with greater capacity.
- An aquatic center and/or basketball facility on the site leased by Urban Discovery Academy's Ideate High School on the west side of Park at Russ. Also suggested are rooftop tennis courts on a new parking garage and a better and higher profile access to athletic fields.
- A student housing building of about 600 beds at 16th and B streets.
- Increased reliance on ride sharing, biking, transit use and autonomous vehicles as a way to reduce parking demand even as the campus population increases. The Working Group suggests that the college lots and garages be open to the public on weekends and holidays with shuttles to and from Balboa Park.
- New garages with flat floors and sufficient ceiling heights to facilitate reuse for office or housing. Existing or new parking lots would incorporate porous permeable pavement and stormwater management.
- Pedestrian access enhanced through more visible and generous crosswalks and better signalization.



- Enhancing the tunnel beneath Curran Plaza over B Street between 14th and 15th streets with better lighting and wider sidewalks. Non-college funding may be required.

### **Transportation, Parking, Circulation**

Everything needs to be connected. Roads, bridges, sidewalks and pathways are more than simple transportation tools. To view them otherwise is to cheapen our city. Since cars and buses will remain a necessity, they must be provided for but somehow subsumed into a pedestrian-oriented experience. Landscaping and urban design improvements leading to and from the park should take inspiration from the park to accentuate these connections and signal to visitors that they are entering a special place. The first phase of the 14th Street Promenade illustrates the potential.

Over the past several decades, dozens of studies were initiated to address parking and circulation issues in Balboa Park, with the most recent being the Friends of Balboa Park's 2021 Parking and



Circulation Study. The park's "Framework for the Future" program provides the appropriate next step to consolidate these studies and implement many of their recommendations. The city's Sustainability and Mobility Department is already considering various parking and circulation options projects. The same thinking can be applied to areas and neighborhoods around the park. But there is much that can be done now while awaiting this future.

For example, the park's shuttle system should be reimagined to include routes to and from existing parking garages and lots, such as City College's garage at 16th and B streets. They could be open on holidays and weekends and after hours as an alternative to building more garages in the and near the park.

Here are some other ideas, some already in the conceptual phase, to consider:

**Russ Boulevard:** Currently, Russ Boulevard separates the high school from the college. But it can be so much more with landscaping enhancements and redirection of vehicular traffic. This upgrade would create a significantly safer student-pedestrian connection between institutions and activate an otherwise dead zone. There is a current

effort to change this “edge” into a “seam.” Led by SDHS and City College in concert with the city, initial design sketches illustrate what is possible at a reasonably low cost. (See *Appendix 4*.)

### Park Boulevard

**Beautification:** SDHS plans anticipate additional landscaping along Park Boulevard that could be complemented by city-initiated right-of-way improvements, such as widened sidewalks and additional plantings and signage. Together they would present a more welcoming entrance at the Interstate 5 offramp for SDHS, City College and Balboa Park. An early and easy improvement could be the placement of boxed trees on the Park Boulevard freeway bridge, followed by permanent landscaping and public art. City College has improvements in mind for its frontage on Park Boulevard. The city also is investigating pedestrian sidewalk improvements with Caltrans on the I-5 bridge. Other ideas are under consideration to beautify the boulevard and extend bike lanes north to Adams Avenue in University Heights and south to San Diego Bay.

**14<sup>th</sup> Street Promenade:** A volunteer group of citizens, aided by city staff among others, developed a comprehensive plan for the upper and lower sections of what is now called the 14th Street Promenade. The 11-block project would reconnect the school sites to the rest of Balboa Park, downtown, and Barrio Logan by extending a connection from C street across the freeway around the stadium and across the pedestrian bridge from Balboa Stadium to Inspiration Point. Civic Communities, a successor to the city's Civic San Diego/Centre City Development Corp. agency, completed a demonstration block in 2021.

**Pedestrian bridges:** To promote walking and biking, several opportunities come to mind. A new bridge could be built from Tweet Street Park on Eighth Avenue to Marston Point, as called for in the Downtown Community Plan. The existing caged, “cattle chute” pedestrian bridge from Balboa Stadium to Inspiration could be replaced with something grander and welcoming.



Park and Russ boulevards, McCullough Landscape Architects, Rob Wellington Quigley Architects

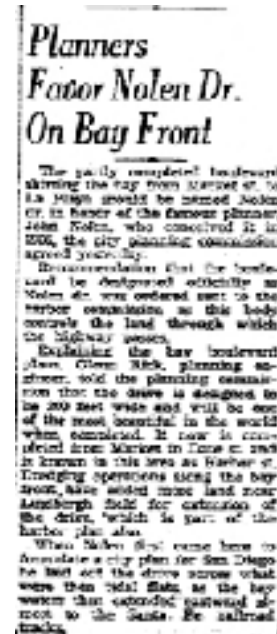


14th Street Promenade, Civic Communities, 2022



Examples of pedestrian bridges, McCullough Landscape Architects

**John Nolen Parkway:** One symbolic but meaningful change would be the simple addition of an honorary name to Park Boulevard – "John Nolen Parkway." The city considered a version of this idea in 1937 when Nolen died. The Planning Commission voted to name Harbor Drive after this national pioneer of city planning in the early years of the 20th century all over America. No further action was taken. The idea, if taken to its logical conclusion, could grow into a scenic parkway that continues along Harbor Drive to Laurel Street and eastward over Cabrillo Bridge, through El Prado and Presidents Way to Park Boulevard.



**Bay to Park Paseo:** It is not necessary to await millions of dollars and years of planning to elevate the experience of walking, biking and motoring along Park Boulevard. Urban Interventions, a local nonprofit that specializes in “tactical urbanism,” and co-producer E. Chloe Lauer have gathered 13 design teams and organizations to install temporary art pieces from the Hilton Bayfront Hotel to the Park Boulevard freeway bridge. The concept is to quickly and at a low cost make improvements that spark imagination and lead to permanent improvements. If successful, the nonprofit says, this "Bay to Park Paseo" could inaugurate a series of biannual installations all over the region. Planners and artists in Tijuana are already inspired by this idea and are considering a paseo there. In the current project, a key installation will be a series of vinyl screens temporarily installed on the Park Boulevard bridge over I-5 with images of the park’s iconic trees — an improvement that could become permanent with the widening of the sidewalk and installation of boxed trees.



Bay-Park Paseo, Urban Interventions, 2023

**Balboa Park entry signs and monuments:** There is only one celebratory entrance to the park — Sefton Plaza at the west entrance to the Cabrillo Bridge and El Prado. The Centre City Development Corp. (now the city's Development Services' Urban Division) studied replacing parking on the Sixth Avenue bridge over I-5 with extensive landscaping that would have enhanced the pedestrian, biking and driving experience and signaled the transition from downtown to the park. That concept is included in the downtown community plan. A 2013 design



Presidents Way entrance monuments, Friends of Balboa Park, 2018, Estrada Land Planning

competition for other such gateway entrances drew many imaginative proposals. The Friends of Balboa Park (now Forever Balboa Park) studied the construction of four domed pavilions at Presidents Way several years later, but the idea foundered on the projected cost of \$500,000 each. Some versions of all these ideas would lend a sense of arrival to the park at various key points, such as Upas Street and Park Boulevard (north), Park Boulevard and I-5 ramps (southwest), Upas and 28th Street (east) and Pershing Drive at Florida Drive (southeast).

**Freeway lids:** The construction of Interstate 5 in the 1950s and '60s split numerous neighborhoods, as well as Balboa Park, in the pursuit of rapid transportation by car, transit, and truck. Some cities have healed such ruptures in their communities by constructing lids over freeways and creating new parkland and building sites. The improvements also helped reduce pollution to the adjacent properties and increased their property value. San Diego installed two such lids when Interstate 15 was extended south of I-8 in the 1990s. The San Diego Commons nonprofit proposes to install lids over I-5 at Sixth Avenue, Park Boulevard, G Street/State Route 94 and Island Avenue. The Biden administration encouraged this concept in its "connecting communities" program and California lawmakers aim to encourage Caltrans and localities to do the same. For Balboa Park, two of these lids would reconnect the park back to downtown, as called for in the Downtown Community Plan. The growing downtown residential and working population could then access the park more directly on foot or bike.



"Reflections," Jeffrey Taitano, AIA Centennial Gateway

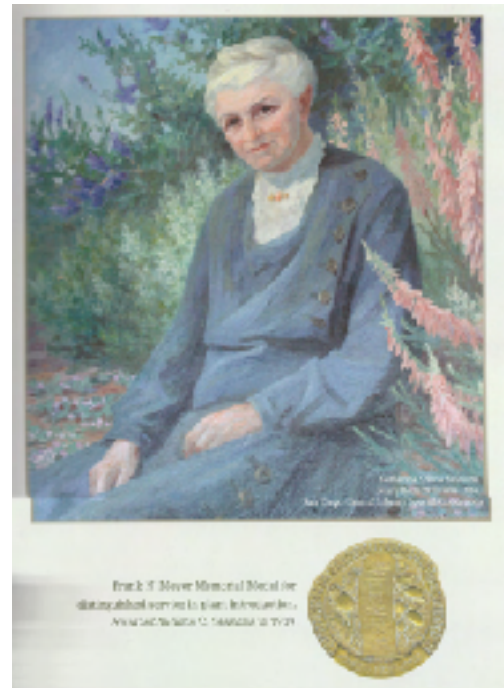


I-5 lid locations: top, 6th Ave.-Park Blvd., bottom, G-J streets., San Diego Commons and Urban Division Story Map, 2023

## Design Review

When it comes to park maintenance and construction projects, it sometimes takes many years to complete even the most utilitarian item, like a restroom or road realignment. Delay often occurs because not enough thought was given at the beginning to a project's architectural appearance or its connection to other potential improvements around it. A recent example: El Prado was torn up to repair sewer and water lines but upgraded gas, electric and communications lines were not included. On other occasions, objections have led to delayed approval, changed blueprints and rebidding. Costs exceed the budget and the project has to be pared back. This happens so repeatedly that it is accepted as a fact of life.

The answer is to identify issues at the beginning, resolve differences and then proceed to bidding and construction. The missing first step is “design review”: Experts peruse the project, seek public input, identify issues and resolve differences. Such a process previously was handled by the Parks & Recreation Board via a panel of industry experts. For the sake of efficiency, the city manager eliminated this step in 2016. The result — cost overruns, canceled projects, and disillusioned citizens. It still takes too long from proposal to completion.



Kate Sessions

A task force of park stakeholders prepared a proposal for reinstating design review along the lines of the now-inactive technical advisory committee answerable to the Parks & Recreation Board. But on the advice of the city attorney's office, city officials recommended Balboa Park Committee members with expertise in design constitute a design review subcommittee. BPC should implement that proposal.

The purpose of design review remains the same: Early review of project design can identify and resolve problems, speed up approval and reduce cost. The likelihood of success is not debatable – there are countless examples globally to prove this point. What we have in San Diego is precisely the opposite — projects that cost much more than originally estimated, take too long to be completed and, ultimately, are less successful and in some cases counterproductive.



For Balboa Park, the existing Balboa Park Committee is the logical panel to review projects. Its own members with professional expertise can perform this duty and welcome outside volunteer experts to augment staff and committee member suggestions.

## **Part 2: SOCIAL INFRASTRUCTURE**

Any discussion of Balboa Park and San Diego High School must acknowledge the myriad contributions of SDHS students, faculty and staff to park institutions over the decades, including outstanding SDHS alumni businessman Philip Klauber, state Senator Jim Mills, Old Globe director Craig Noel, physician Homer Peabody and architect Lloyd Ruocco.. The school/park connection may best be symbolized by Kate Sessions (1857-1940). Not only is she considered “the mother of Balboa Park” by virtue of her park planting campaigns but she also previously taught and briefly served as principal of the Russ School in the 1880s before it was renamed San Diego High School.

Among her many writings over more than 50 years were these classic statements by the very determined and single-minded horticulturist, nurserywoman and civic leader: “I’m going to boss every bit of that planting myself,” ca. 1931, and “How wisely these early settlers located for safety first and then for beauty, and having once lived here for a generation or two, no other location was ever found more beautiful. They planted for posterity,” 1925

Kate Sessions



E3 High School, Central Library, LPA Design Studios

The great opportunity presented by the SDHS reconstruction and City College expansion is to leverage the educational, cultural and recreational assets of Balboa Park to enhance the student experience at the two institutions. Students’ enthusiasm and energy, in turn, could contribute to the park in so many ways. This is what the Working Group means by “social infrastructure.”

This opportunity reaches up and down the entire length of Park Boulevard. From Birney Elementary to the far north in University Heights to the Charter School of San Diego campus to the south in the Ballpark District, from preschool to post-graduate work and life-long learning thereafter, this



“educational armature” serves as an urban laboratory for students and the general public who can tap vast resources and community programming to plan their futures.

The proximity of so many community stakeholders is virtually untapped and presents an opportunity for collaboration, employment, mentorship, internship, volunteerism, business startups and performative expression.

Storm trooper, Comic-Con Museum, 2019

Social infrastructure along Park Boulevard also includes two other benefits — cultural resources available from the museums and performing arts, and sports and recreation programs and facilities, both formal and informal. World-class performances at the Old Globe, cutting-edge 3-D printing at Comic-Con Museum and everything in between is available within walking distance of Park Boulevard.

In each realm, research into the existing program offerings, both in the park and the educational armature is a natural starting point. To develop this potential, the Working Group believes an inventory is needed to catalog all that is available in educational programs and outreach efforts, cultural offerings and recreation activities that are organized or casual. (See *Appendix 4*.)



Park & Market amphitheater, UCSD

Similarly, a regularly updated listing of internships, job-readiness programs, together with contact information, would represent a wealth of opportunities for all San Diegans to explore. Perhaps agencies such as the San Diego Foundation, the San Diego Workforce Partnership or UCSD Park & Market researchers could compile a starting inventory. The effort would benefit if each entity taps one person to serve as its social infrastructure coordinator to supply data and details to the research team.

Undoubtedly this research would uncover more chances to create new linkages and spark stakeholders to create even more points of engagement. As an example, education directors at the museums and principals at nearby schools could meet regularly to reinforce each other's programs.

(See *Appendix 6 for list of Social Infrastructure venues and institutions*.)

## **Education**

So many schools close to Balboa Park point to the huge educational benefits of sharing the park's resources more comprehensively with students, their families, and lifelong

learners in the community. Here is a starting list of academic institutions comprising the Educational Armature:

Altus Charter School of SD  
 Birney Elementary  
 Charter School of San Diego  
 e3 Civic High School  
 Garfield High School  
 IDEATE High Academy  
 Kipp Adelante Prep Academy  
 Museum School  
 NewSchool of Architecture &  
 Design  
 Theodore Roosevelt Middle  
 School  
 San Diego City College  
 San Diego High School  
 School in the Park  
 UC San Diego Park &  
 Market  
 Urban Corps San Diego  
 Urban Discovery Academy  
 (Russ Blvd)  
 Urban Discovery Academy  
 (Village Green)



NewSchool of Architecture students and Portland, Ore., Ford District project team, 2016

Currently, only a few of the institutions have programs directly tied to the park. At the same time, park institutions have a limited number of programs designed to serve area students. Every student in the educational armature should be introduced to the life-long learning opportunities that exist in the park. It's worth noting that virtually every ZIP code in San Diego County is represented in these educational and cultural institutions as a whole.

For many students, the benefits of hands-on experiential learning outside of the classroom can make a real difference in their readiness to learn. Whole new modes of learning can be found through the unique connections to the park's multi-faceted cultural environment -- different learning sources compared to home or school settings. Students and families can benefit from these



Education Corridor logo, Regan Decker, NSAD, 2022

experiences, and faculty engaged in park-based learning may also find inspiration and ideas from this approach.

Known programs include the following and further research would undoubtedly identify many more

- Summer camp programs held by park institutions
- School in the Park visits by elementary and middle school students
- Field trip programming offered by park institutions
- Internship and volunteer opportunities in the park
- The “Level Up” program at the San Diego Unified School District

### **Cultural Resources**

Not only students but the general public can benefit from greater awareness of the remarkable cultural assets of Balboa Park. In the interest of improving diversity, equity, and inclusion, particularly for those with limited means to access and enjoy the park, new programs could be created along with the planned physical improvements that are coming in the years ahead.

In addition to new performing arts venues planned for SDHS and City College, the development of joint-use agreements and resource-sharing can aid park groups in their operations and outreach. Institutions inside and outside the park offer programs that cultivate life-long learning and entertainment, such as summer and holiday events, arts and horticultural classes and programs complementing city gardeners and other volunteers.

To these could be added further collaborative projects, such as the digitization of historic archives retained by park institutions; a periodical publication highlighting volunteer opportunities as well as ongoing programs and events; and a recurring forum that would bring together park leaders and volunteers with members of the surrounding communities.



Auto Museum Vocational Education Academy, [sdautomuseum.org](http://sdautomuseum.org)



Fleet Science Center STEM Camp



West African drumming class, World Beat Center, 2014

Virtually every park institution offers cultural resources beyond their exhibitions and performances. Examples include:

- Centro Cultural de la Raza's La Tiendita
- Fleet Science Center's Be Wise
- Forever Balboa Park's Tree Stewards
- Natural History Museum's Canyoneers
- Mingei Museum's Mini Mingei and Lifelong Makers
- Old Globe Theatre's Summer Shakespeare and Summer Conservatory
- San Diego Automotive Museum's Vocational Education Academy
- San Diego Casa del Prado's plant and horticulture classes
- San Diego Comic-Con Museum's Cox Innovation Lab and Conrad Prebys Foundation Art Studio
- San Diego History Center's Oral History Project
- San Diego Junior Theater
- San Diego Museum of Art's Art for All
- San Diego Youth Symphony and Conservatory
- San Diego Zoo Corps and Conservation Career Quest
- World Beat Center's Outdoor Classroom and Noise Project Research



Balboa Park custom tour with Visitor Center guide, [balboapark.org](http://balboapark.org)

Outside the park exists a variety of cultural and historic districts whose leaders could collaborate with park institutions. They include:

- The Barrio Logan state cultural district linked to the park via the San Diego Trolley at Smart Corner, Broadway at Park Boulevard.
- The Black Arts and Culture District in Encanto lies along the Imperial Avenue trolley line that connects the neighborhood to the park also at Smart Corner.
- The Convoy District in Kearny Mesa promotes Pan-Asian restaurants and businesses that could link to art collections and programs at the San Diego Museum of Art, Mingei Museum and Japanese Friendship Garden. Its annual Night Market is an example of creating a fun gathering place for all San Diegans.
- Oceanside's state cultural district can



San Diego Youth Symphony, [balboapark.org](http://balboapark.org)



San Diego Night Market, Convoy District, [sdnightmarket.com](http://sdnightmarket.com)

call on the San Diego History Center for research resources and Oceanside residents can travel on public transit via the North County Transit District's Coaster and transfer to bus routes serving the park.

- Old Town State Historic Park is served by the major transportation center and has ties to the collections at the San Diego History Center in the park as well as the center's Serra Museum in Presidio Park.
- The San Diego Tourism Authority markets the region's cultural landmarks and events, many of which are located in the park.



Mario Torero tour of Chicano Park murals, mariotorero.art

And of course, all of San Diego can attend games, concerts and special events at Petco Park, just down the street from Balboa Park.

### **Sports and Recreation**

Pickup games of volleyball, touch football, basketball and disco golf, lawn bowling, tennis, archery, golf and swimming, mountain biking, velodrome competition, 10k's and marathons, trail hikes and a full calendar of Parks & Recreation programs — it's mind boggling how many activities take place daily within Balboa Park's 1,172 acres. Many are offered at low or no cost and are available to all. There are numerous clubs and special interest groups active in the park, especially at Spanish Village and the House of Pacific Relations. The programs of the Parks & Recreation Department are excellent vehicles for promoting diversity, equity, and inclusion. The community as a whole would benefit from additional marketing and promotion of these programs and opportunities.



San Diego Archery Range, sandiegoarchers.com

The park serves the entire region as well as its immediate neighborhoods with offerings not available anywhere else. But the Working Group believes many San Diegans don't realize how vast the opportunities are and how accessible they are to every income group and demographic. It's time to boast about all that's available and find ways to communicate to residents and workers near and far. Perhaps a "Balboa Park" magazine should be published both

in print and online to spread the word. Given the attraction Balboa Park has for tourists as well locals, the Tourism Marketing District and San Diego Tourism Authority might consider launching such an effort.

As with cultural resources, a concerted effort is needed to catalog all that is available for sports and recreation. The San Diego Sports Association, Sierra Club and other community organizations could be enlisted to take this on.



San Diego Velodrome, sdvelodrome.com

Closer ties between the park and surrounding neighborhoods would strengthen both and create new models for learning, equity sharing and long-term community development. Enhancing the value of what the park is contributing to the community and how the community is supporting the park will pay future dividends, ensuring the survival of the park as a cultural center of excellence and enriching the neighborhoods through experiences in the park.

### **Other ideas to consider**

- An Educational Passport Program offering free or low-cost admittance for students through the college level
- A speakers bureau to go on the road and make presentations to schools, companies and even those struggling to right their lives
- Independent study opportunities
- A youth advisory board based in Balboa Park could add a new perspective from the next generation of San Diegans on programs, projects, facilities and other policies. An annual summit of park, business, education and youth leaders could highlight successes and explore new initiatives.
- Test marketing of new programs could occur in cooperation with nearby educational establishments. A parallel research effort could quantify the benefits of existing and proposed programs, both to the park institutions and residents, visitors and businesses.
- Coordinated internship, volunteer and employment outreach efforts, such as with the San Diego Workforce Partnership, could expand the universe of all age and income groups who could contribute to the park's improvement and the neighborhoods where they live.



San Diego Youth Commission mayoral press conference

- Many park institutions already operate programs and outreach programs beyond the park. A checklist of such efforts could be maintained to acquaint residents and businesses with details on how to participate.
- School work can often include assignments that relate to the programs and collections in the park. A survey of curricula at all grade levels could reveal opportunities for classroom-park collaboration.
- To justify a focus on Balboa Park, more data should be collected to track where park visitors and park-area students come from, how long they stay and how much they spend. The San Diego Taxpayers Association often conducts such revenue and expense studies.
- How to pay for all this research? Area foundations, such as the San Diego Foundation, are eager to promote education and connect institutions with each other.



Old Globe Theatre's "Globe for All" community performance

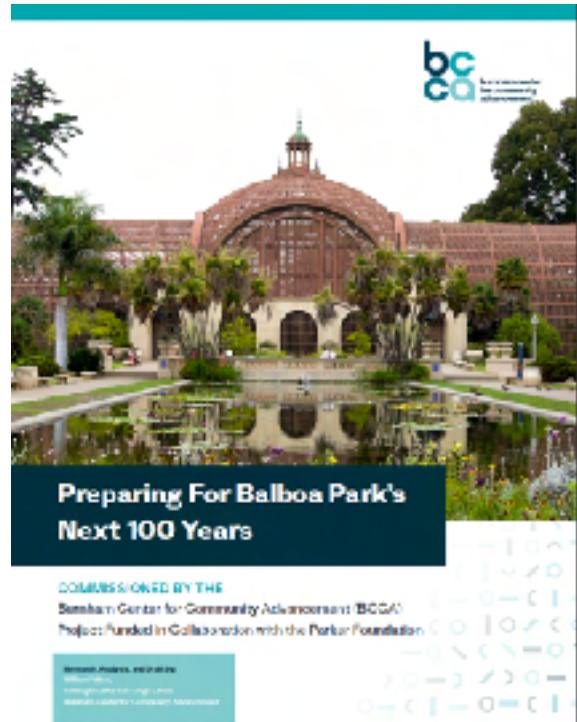


## **Part 3: Governance and Finance**

The Burnham Center for Community Advancement’s 2022 white paper, “Preparing Balboa Park for the Next 100 years,” launched a region-wide effort to generate more money for the park and reform its management and oversight.

Meanwhile, state and local grants augment city budget actions to address long-delayed attention to deferred maintenance and infrastructure shortfalls. And thousands of donors, big and small, continue to support park institutions as they build and manage their collections, develop exhibitions and schedule performances and sports events.

The truth of the matter is that Balboa Park, unlike Mission Bay Park, has no guaranteed revenue source to underwrite park activities and maintain its buildings and grounds. A cursory look at some of the unfunded needs add up to a wish list of \$500 million or more. And perhaps surprisingly, there is no “budget” for the park; its upkeep is spread across many departments. The tax income from sales plus modest lease payments inside the park for the most part flow into the city general fund with no promise to return back to the park. Hence, there is no reckoning between spending and income and thus no accountability.



As for park management, Balboa Park was originally overseen by an independent Park Commission, answerable to the City Council. But responsibility shifted to the city manager in the 1930s. With the approval of a strong-mayor form of government in the 2000s, the mayor took over the city’s chief operating officer role and became responsible. The Parks & Recreation Board serves in a strictly advisory capacity with no management responsibility. Within the Parks & Recreation Department, Balboa Park is just one of several developed regional parks, along with Mission Bay, Presidio and shoreline parks. But other P&R department divisions and city departments handle the park’s recreation, maintenance, design and construction, leases, streets, utilities and other day-to-day matters.

The upshot is that there is no central authority responsible for the park. Decision making is dispersed and accountability is hard to pin down. This leaves scores of cultural institutions and recreational interests to compete for annual appropriations, grants,

memberships and visitors with the hope that at budget time, they might receive city support. Capital improvements to park buildings also need to be planned and funded more systematically and comprehensively.

Numerous alternatives have been considered over the years, but however the management structure is arranged, the biggest impediment to progress in the park is money — how much does it need, where will more come from and who will spend it?

This Working Group can't make the necessary changes happen. *New York Times* columnist Ezra Klein phrased the challenge this way in an October 2023 opinion piece about Marc Andreessen, godfather of the web browser: "coordinated genius and muscle of society to pull possibilities from the far future into the near present."

## **Part 4: Final Thoughts**

The rebuilding of San Diego High School presents a once-in-a-century opportunity to achieve several longstanding goals all at once.

The school can become more beautiful, as it was in earlier iterations. Its proximity to City College can smooth the way for high school kids to pursue successful careers and college students to mentor their younger buddies. The two institutions together can partner with other educational establishments up and down Park Boulevard to act as an academic powerhouse that thrives on collaboration, encourages internship opportunities, promotes youthful volunteerism and boosts civic involvement.

Then comes the obvious linkages between schools and Balboa Park's cultural institutions. This collection of museums, performance spaces and our world-famous zoo represent a unique, out-of-classroom opportunity to augment standard curriculum with hands-on access to art, science, history and nature. Such programs already exist but many more could be offered with a little bit of nudging. And don't forget the dozens of sports, recreation and groups from all over the region that gravitate to the park's many playgrounds, ball fields, open spaces — let alone thousands who walk, jog, bike, swim, golf and stretch in their carefree time.



Now take that park-school connection and pair it with area businesses, agencies, nonprofits and the thousands of residents downtown and in surrounding ZIP codes. A decade ago the inventors of the "I.D.E.A. District" had it right: This area of San Diego should be the nexus of innovation, design, education and the arts. It's the only place in San Diego County and perhaps in

the state or nation where so many brains, entrepreneurs, energetic urban dwellers and creatives live, work and play within steps of each other.

This report — really a planning framework — is based on one simple, self-evident observation: Everything is connected. Instead of focusing on one-and-done projects, San Diego has a chance to tackle everything all at once and make a difference in countless lives. This isn't dependent solely on money or political will. It's something every person, every institution, public or private, can work at. (*See implementation table, Appendix 2.*)

The accompanying matrix illustrates many paths available to turn ideas into results. The appendix includes links and sources for further review. Not only are we all connected but we are empowered to make this happen — by virtue of our voices, our votes and our actions. It's both a bottom-up and top-down to-do list. From the mayor down to the man, woman and child on street, everyone has a role to play and we commend all to join in to implement these ideas and plenty more waiting to be articulated.

Seize the opportunity to make things happen. As John Nolen said in his 1908 city plan for San Diego:

"The present is a most propitious time to consider in a frank, clear-headed and comprehensive manner the future of San Diego."

# **Appendices**

1. Stakeholders, participants, organizations
2. Implementation table
3. Russ/Park boulevards, Balboa Stadium, I-5 bridges improvements
4. Story Map
5. References
6. Checklist of cultural arts venues, gardens, parks, plazas, open spaces, recreational venues

# Appendix 1

## Stakeholders, Participants, Organizations

### Balboa Park

- Balboa Park Committee of 100: Ross Porter, Roger Showley, René Smith, Mike Stepner
- Balboa Park Cultural Partnership: Peter Comiskey
- Forever Balboa Park: Elizabeth Babcock

### San Diego Community College District/City College

- Lance Lareau, SDCCD architect
- Rob Quigley, Rob Wellington Quigley Architects
- RNT Architects

### San Diego Unified School District/San Diego High School

- Lee Dulgeroff, Samer Naji, SDUSD Facilities
- David McCullough, McCullough Landscape Architects
- Victor Navarro, Mosher Drew Architects

### City of San Diego

- Councilmembers Joe LaCava, Stephen Whitburn
- Steve Hill, mayor's office
- Andy Field, director, Parks and Recreation Department
- Brian Schoenfisch, Development Services Urban Division
- Balboa Park Committee

### Community

- Betsy Brennan, Downtown San Diego Partnership
- Bob Link, East Village Association

*Note: Some of these individuals participated in the regular meetings of the Working Group.*

## Appendix 2

### BP/SDHS Connections Working Group: Implementation Recommendations

Physical Infrastructure	Participants	Output	Timeframe	Notes
<b>SDHS</b>				Ref: Campus Modernization Plan
Public use of social facilities	SDHS, City [P&R]	Formal Agreement	Near Term	
Balboa Stadium	SDHS, City [P&R]	Formal Agreement	Mid/Long	Mid term-Engagement in design alternatives. Long term-formal agreement
Parking Structures, including Inspiration Point	SDHS, City [P&R]	Formal Agreement	Near/Mid	Near term-use of current structures. Mid term-coordinated planning
Athletic facilities and future gym	SDHS, City [P&R]	Formal Agreement	Near/Mid	Near term-use of current structures. Mid term-coordinated planning
Physical Connections – Develop a joint implementation model	SDHS, City [P&R, Mobility, DSD], SDCC	Informal Agreement	Near/Mid	Park Boulevard, Russ Boulevard, 14 <sup>th</sup> Street
Landscaping	SDHS, City [DSD], Downtown Partnership	Informal Agreement	Near	In process
<b>City College</b>				See Transportation, Parking, Circulation
City College Parking, nights/weekends as available	SDCC, SDHS, City [P&R]	Formal Agreement	Near/Mid	Including expansion of shuttle service. Ref: City College Master Plan – in process
Public use of social facilities	SDCC, SDHS, City [P&R]	Formal Agreement	Mid/Long	Mid term-Engagement in design alternatives. Long term-formal agreement

B Street enhancements	SDCC, City [DSD]	Informal Agreement	Mid/Long	Consider opportunities
<b>Transportation, Parking, Circulation</b>				
Framework for the Future – Initiative #3	City [P&R, Mobility]	Award contracts as indicated for the five studies	Mid term	Complete Initiative 3-Mobility
Develop an Implementation Plan linked to Governance and Funding [below]	City [Mayor, Council]	Formal commitment	Mid term	Coordinate with BCCA
Shuttle	City [P&R, Mobility, DSD], SDCC, Downtown Partnership [DWNTTP]	Informal agreement to identify constraints, options	Near term	Consider all options, e.g., FRED
Russ Boulevard Improvements	City [DSD], SDCC	Informal agreement	Near term	Ref: Dwgs McCullough/Quigley
Park Boulevard Beautification	City [DSD], SDCC, DWNTTP	Informal agreement	Near term	Including trees in median- SDHS area
14 <sup>th</sup> Street Promenade Improvements	City [DSD, Mobility, P&R], SDHS, SDCC, DWNTTP	Informal agreement	Near/Mid	Ref: 14 <sup>th</sup> Street Working Group report
Formal naming of John Nolen Parkway	City [Council]	Formal commitment	Near	Ref: Council Policy on street naming
Bay to Park Paseo	All involved parties	World Design Capital initiative	Near	Ref: Urban Interventions project brief
Balboa Park Entry signs	TBD	TBD	Medium	Ref: AIA report on design competition, Friends of Balboa Park proposals for gatehouses
Freeway Lids	TBD	TBD	Long	Ref: San Diego Commons website; Friends of BP Parking & Circulation study



<b>Design Review</b>	City [P&R]	BPC or P&R Board	Near	Ref: P&R report to Balboa Park Committee & final report of the Design Review Exploratory Committee
<b>Social Infrastructure</b>	<b>Participants</b>	<b>Output</b>	<b>Timeframe</b>	<b>Notes</b>
Identify agencies to lead initiatives	BPCP, Downtown Partnership, UCSD, etc.	List of initiatives and lead agencies	Near term	Identify coordinating agents, develop joint-use agreements, including resource-sharing
Convene educators' meetups	Park institutions, educational armature entities	Contact lists; inventory of educational programs	Near term	E.g. research existing program offerings, listing of internships, job-readiness programs
Youth Advisory Board	BPCP; FBP	Meeting schedule; work agenda	Medium term	
Research: curriculum-based programs	Park institutions, educational armature entities	Online, updatable inventory	Medium term	
Research: enrichment programs for general public	Park institutions, cultural armature entities	Online, updatable inventory	Medium term	
Research: sports/recreation programs	Park institutions, sports/recreation armature entities	Online, updatable inventory	Medium term	

Develop Collaborative Projects	Park institutions and armature entities	Online, updatable inventory	Medium term	E.g.: digitization of historic archives, using visitor demographics to enhance community-park linkages
Include these recommendations in all other park planning efforts	City [P&R, Youth Services, etc.], Park and Armature institutions	Informal agreements	Medium term	E.g. Framework for the Future, One Park One Experience, BCCA funding/governance work
Explore potential funding sources to support social infrastructure development	Develop an implementation plan	Formal commitment	Near term	Coordinate with BCCA
<b>Governance and Funding</b>	<b>Participants</b>	<b>Output</b>	<b>Timeframe</b>	<b>Notes</b>
Completion of the Burnham Center for Community Advancement work	BCCA	Final report	Near term	
Acceptance of the reports recommendations by appropriate government agencies.	City [Mayor, Council], County [Supervisors],	Formal acceptance	Medium term	Potentially other involved governmental agencies. Establishment of an implementation process
Implementation of the final report	Above plus multiple affiliated organizations	Tangible results	Medium to Long term	

## Appendix 3

### Story Map

Development Services Department-Urban Division



<https://webmaps.sandiego.gov/portal/apps/storymaps/stories/1f7ce2bbacce4f4287b0cc563a0755db> or <http://tinyurl.com/ymvu595v>

*(Note: Best viewed with Chrome browser. For more information, contact Brian Schoenfisch or John Whalen at the Development Services' Urban Division.)*

## Appendix 4

# ***Russ/Park Boulevard, Balboa Stadium, I-5 bridge improvements***

Sources: McCullough Landscape Architects, Rob Wellington Quigley Architects





### Phase 1

Reduce Russ Boulevard drive aisle to one-way traveling east to west to 12-foot wide with enhanced concrete pavers.

- Enhance pedestrian north/south walkways and for improved high school, community college pedestrian access.
- Convert new demolished roadway area into landscape and potential stormwater treatment areas.
- Convert north side of the drive aisle (east of campus entry steps and ADA ramp) to bus loading and unloading zone.



## Phase 2

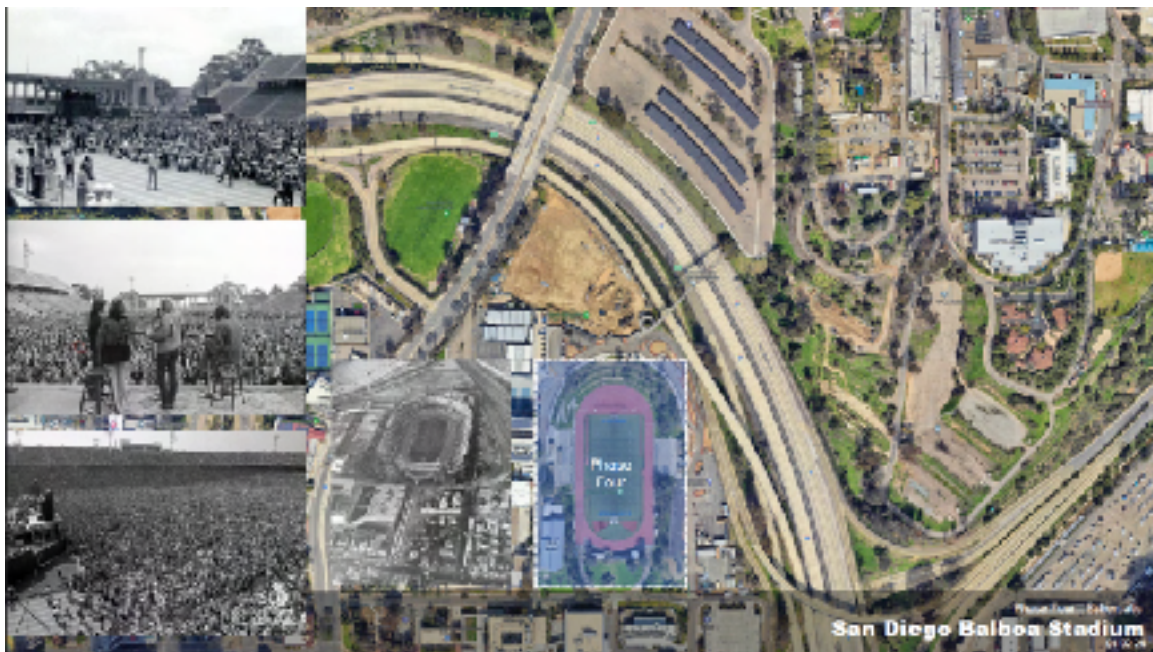
- Continue a seamless multicampus connection between SDHS and City College
- Continue the Russ Boulevard improvements. Restrict traffic to service vehicles only with one-way westbound movement from 16<sup>th</sup> Street to Park Blvd.
- Expand the use of enhanced paver materials and add curbless transitions for pedestrian circulation, promenade-like prominence
- Add landscape and tree cover Include stormwater permeability and treatment
- Address south-facing and north-facing levels that overlook Russ Boulevard from City College and SDHS, respectively.



### Phase 3

- Provide Park Boulevard landscape improvements including; medians, general public right-of-way, SDHS frontage, and the Interstate 5 off-ramp.
- Provide enhanced wayfinding and welcome signage.
- Create an improved pedestrian experience with wider sidewalks throughout.
- Enhance security fencing for SDHS and adjacent athletic fields.
- Increase stormwater permeability and treatment opportunities where feasible.
- Improve Caltrans bridge crossing at Interstate 5.
- Enhance the welcome experience at the I-5/Park Boulevard on- and offramp • intersection
- Narrow the roadway or build “bulb-outs” on Russ Blvd. and A Street sidewalks for improved pedestrian experience
- Improve bike lane, buffered by a row of shade trees in raised planters.





#### Phase 4

- Reconstruct Balboa Stadium, including its historic 1915 peristyle, for joint use by SDHS and community at large.





**Phase 5**

- Reconstruct the pedestrian bridge between Balboa Stadium and Inspiration Point as an enhanced and celebratory gateway to Balboa Park
- Treat this new bridge as an object of civic pride and an art project in lieu of a common engineering project.

### Complete Vision



## Appendix 5: References

Background:

*Balboa Park and the 1915 Exposition*, Richard Amero, History Press, 2013

Balboa Park Committee: <https://www.sandiego.gov/park-and-recreation/general-info/boards/bpc>

Balboa Park Committee of 100: <https://www.balboaparkcommitteeof100.org/>

Balboa Park Cultural Partnership: <https://bpcp.org/>

*Balboa Park: A Millennium History: A Millennium History*, Roger Showley, Heritage Media, 1999

"Balboa Park: The Next 100 Years," *San Diego Union-Tribune*, Jan. 3, 2016

*California's Cornerstone*, Iris Engstrand, 2016

"Cedar Street Mall," *City of the Dream*, Richard F. Pourade, 1977, Copley Press, pp 66ff, <https://sandieghistory.org/archives/books/citydream/chronology/>

*Discover Balboa Park: A Complete Guide to America's Greatest Urban Park*, Pam Crooks, Ridgway Park Publishing, 2006

"Downtown Community Plan," 2006, <https://www.sandiego.gov/development-services/news-programs/downtown-development>

Downtown San Diego Partnership: <https://downtownsandiego.org/>

Forever Balboa Park: <https://foreveralboapark.org/>

East Village: "Here's What You Need to Know about the East Village Education Corridor," *San Diego Sun*, Feb. 3, 2023

*History of San Diego*, Richard Pourade, Copley Press, 6 vols., 1960-1977, <https://sandieghistory.org/archives/books/>

I.D.E.A. District: sales book, IDE 05 I.D.E.A. Sales Book.pdf: IDEA1 building, <https://www.facebook.com/ideadistrictsd/>. For I.D.E.A. District background, contact Urban Interventions, <https://urbaninterventions.org/about/>

Interstate 5 freeway lids: San Diego Commons, <https://greenthegap.org/>

San Diego "story map": <https://webmaps.sandiego.gov/portal/apps/storymaps/stories/1f7ce2bbacce4f4287b0cc563a0755db> or <http://tinyurl.com/ymvu595v>

*Plan for San Diego, California*, John Nolen, 1926, <http://tinyurl.com/346benv7> or [https://www.google.com/books/edition/A\\_Comprehensive\\_City\\_Plan\\_for\\_San\\_Diego/3N2eFjhoOIEC?hl=en&gbpv=1&dq=plan+for+san+diego+nolen&printsec=frontcover](https://www.google.com/books/edition/A_Comprehensive_City_Plan_for_San_Diego/3N2eFjhoOIEC?hl=en&gbpv=1&dq=plan+for+san+diego+nolen&printsec=frontcover)

"Put a Little Love in Your Park," [YouTube.com/watch?v=KBwxNKZscs8](https://www.youtube.com/watch?v=KBwxNKZscs8)

*The Romance of Balboa Park*, Florence Christman, San Diego Historical Society, 1985

*San Diego: A Comprehensive Plan for Its Improvement*, John Nolen, 1908, [https://www.google.com/books/edition/San\\_Diego\\_a\\_Comprehensive\\_Plan\\_for\\_Its\\_I/XERGAAAAMAAJ?hl=en&gbpv=1&dq=San+Diego](https://www.google.com/books/edition/San_Diego_a_Comprehensive_Plan_for_Its_I/XERGAAAAMAAJ?hl=en&gbpv=1&dq=San+Diego):

*San Diego's Balboa Park*, David Marshall, Arcadia Publishing, 2007

"San Diego High School District and Balboa Park," Richard Amero, [http://balboaparkhistory.net/glimpses/sdhs\\_balboa\\_park.pdf](http://balboaparkhistory.net/glimpses/sdhs_balboa_park.pdf) and <http://balboaparkhistory.net/glimpses/index.htm>

*Temporary Paradise? A Look at the Special Landscape of the San Diego Region*, Kevin Lynch and Donald Appleyard, 1974 and commemorative edition, 2017; <https://c3sandiego.org/About> and tap "publications" and click on the PDF link to download a copy; also available at San Diego Public Library, <https://sandiego.bibliocommons.com/v2/record/S161C719919>  
 World Design Capital 2024: San Diego/Tijuana, <https://wdc2024.org/>

## Part 1: Physical Infrastructure

- Balboa Park Gateway Competition, American Institute of Architects San Diego, 2013, <https://aiasandiego.org/blog/winning-gateways-bridge-balboa-parks-canyon> and <https://aiasandiego.org/blog/balboa-park-centennial-gateway-competition>
- Balboa Park Parking & Circulation task force report presentation, Friends of Balboa Park, March 4, 2021, Item 502, <https://www.sandiego.gov/park-and-recreation/general-info/boards/bpc/bpc2021>
- Balboa Stadium, [https://en.wikipedia.org/wiki/Balboa\\_Stadium](https://en.wikipedia.org/wiki/Balboa_Stadium)
- "Bay to Park Paseo," 2024, <https://www.baytoparkpaseo.org/>
- Design review: <https://www.sandiego.gov/sites/default/files/bpcagenda20220303-item501a.pdf> and <https://www.sandiego.gov/park-and-recreation/general-info/boards/bpc/bpc2022>, <March 3 agenda, Item 501a, b, c.
- 14th Street Promenade, <https://civiccommunities.com/portfolio/14th-street-promenade/>
- Interstate 5 freeway lids, San Diego Commons, <https://greenthegap.org/>
- Parking & Circulation Study, Friends of Balboa Park, 2021 [INSERT LINK]
- "San Diego City College Facilities Master Plan," 2022: 220406\_SDCC\_Facilities Master Plan DRAFT\_reduced.pdf [INSERT LINK]
- "San Diego High School Modernization and Long-Range Master Plan," [https://cdns5-ss18.sharpschool.com/UserFiles/Servers/Server\\_27732394/File/Facilities%20Planning%20and%20Construction/Environmental/SDHS\\_WSM\\_NOP\\_Initial\\_Study\\_29May2020.pdf](https://cdns5-ss18.sharpschool.com/UserFiles/Servers/Server_27732394/File/Facilities%20Planning%20and%20Construction/Environmental/SDHS_WSM_NOP_Initial_Study_29May2020.pdf) or <http://tinyurl.com/343b8wku>
- "Planners Favor Nolen Drive on Bay Front," March 19, 1937, San Diego Union page 2, <http://tinyurl.com/2eundbuh>

## Part 2: Social Infrastructure

### Education:

E3 Civic High School: [www.e3civichigh.com](http://www.e3civichigh.com)  
 Fleet Science Center STEM Camps: [fleetscience.org/events/camps](http://fleetscience.org/events/camps)  
 Kate Session quotes, San Diego Floral Association, [sdfloreal.org/kos-book.htm](http://sdfloreal.org/kos-book.htm)  
 "Level Up," San Diego Unified School District: or [www.sandiegounified.org/departments/extended\\_learning\\_opportunities\\_elo/level\\_up](http://www.sandiegounified.org/departments/extended_learning_opportunities_elo/level_up) or [tinyurl.com/392pjc4t](http://tinyurl.com/392pjc4t)  
 UC San Diego Park & Market Building: [parkandmarket.ucsd.edu](http://parkandmarket.ucsd.edu)  
 Urban Corps, San Diego County: [urbancorpssd.org](http://urbancorpssd.org)

### Cultural Resources:

Barrio Logan State Cultural District: <https://www.caculturaldistricts.org/barrio-logan>  
 Convoy District Night Market: <https://www.sdnightmarket.com/>

Oceanside State Cultural District: <https://www.caculturaldistricts.org/oceanside>  
 Old Town San Diego State Historic Park: [https://www.parks.ca.gov/?page\\_id=663](https://www.parks.ca.gov/?page_id=663)  
 San Diego Automotive Museum Vocational Education Academy: <https://sdautomuseum.org/pages/vocational-education-academy> or <http://tinyurl.com/7mj3ksnu>  
 San Diego Black Arts and Culture District: <https://www.sdblackacd.org/>  
 San Diego History Center: <https://sandiegohistory.org/>  
 San Diego Tourism Authority: <https://www.sandiego.org/about.aspx>  
 San Diego Youth Symphony: <https://sdys.org/>  
 World Beat Center: <https://www.worldbeatcenter.org/classes/>

#### Sports and Recreation:

Balboa Park: <https://balboapark.org/parks-trails-gardens/balboa-park-recreation-activities/> or <http://tinyurl.com/5n7rmcf7>  
 San Diego Parks & Recreation Department: <https://www.sandiego.gov/parks-and-recreation>  
 San Diego Sports Association: <https://sandiegosportsassociation.com/>  
 Sierra Club, San Diego chapter: <https://sandiegosierraclub.org/>

#### Other ideas:

Internships and jobs: <https://www.workforce.org/>  
 San Diego Foundation: <https://www.sdfoundation.org/>  
 San Diego Tourism Marketing District: <https://sdtmd.org/>  
 San Diego Youth Services and Youth Commission: <https://sdyouthservices.org/youth-action-board/>, <https://www.sandiego.gov/youth-commission> or <http://tinyurl.com/pwjw52hk>

#### Governance and Finance

Burnham Center for Community Advancement, "Preparing Balboa Park for Its Next 100 Years": [https://assets-global.website-files.com/640a24a263c976dc17dbbd18/640a24a263c9760573dbbd93\\_BCCA-White Paper Final Nov 2022.pdf](https://assets-global.website-files.com/640a24a263c976dc17dbbd18/640a24a263c9760573dbbd93_BCCA-White Paper Final Nov 2022.pdf) or <http://tinyurl.com/bdhymfmw>

## Appendix 6

# Checklist of cultural arts venues, gardens, parks, plazas, open spaces, recreational venues

## Performing Arts Venues and Movie Theaters

### Downtown and Environs

Alderaan Memorial Theatre (movies)  
1944 Commercial St.  
SD 9211

American Comedy Company  
818 B Sixth Ave.

Antoinette's Anime Theater (movies)  
1050 B St.

Balboa Theatre  
868 Fourth Ave

Copley Symphony Hall  
750 B St.

Digital Gym Cinema  
1100 Market St.

The Double Deuce  
528 F Street

Frauds and Swindlers and Two Fingers  
820 Fifth Ave.

Horton Grand Theater  
444 Fourth Ave.

Landmark Theaters/Hillcrest Cinemas  
3965 Fifth Ave.  
SD 92103

Lyceum Theaters (two stages)

324 Horton Plaza/  
(Broadway Circle at Third Ave.)

Mooby's (movies)  
401 G St.

Music Box San Diego  
1337 India St.

Mystique Dining (dinner theater)  
827 Fourth Ave.

Onyx Room  
852 5th Avenue  
San Diego CA 92101

Rooftop Cinema Club  
Manchester Grand Hyatt San Diego  
1 Market Place

Quartyard  
1301 Market St.  
San Diego CA 92101

Queen Bee's Culture Center  
3925 Ohio St  
SD 92104

Rady Shell at Jacobs Park  
222 Marina Park Wa

San Diego Civic Theatre  
3666 Fourth Ave.  
San Diego CA

Saville Theater  
City College  
1345 C St.

Spreckels Organ Pavilion  
Pan-American Road East at Plaza de  
Panama

Spreckels Theatre  
121 Broadway

Stage Bar & Grill  
762 Fifth Ave.  
San Diego CA 92101

Tenth Avenue Arts Center  
930 10th Ave.

Thornton Theater (movies, lectures)  
San Diego History Center  
1649 El Prado

Wegeforth Bowl  
San Diego Zoo  
2920 Zoo Drive

Western Metal Theater  
Petco Park  
100 Park Blvd.

Zable Theater (3D/4D)  
San Diego Air & Space Museum  
2001 Pan American Plaza

### Balboa Park

La Atalaya Foundation Theater  
Mingei Museum  
1439 El Prado

Casa del Prado Theater  
1600 Village Place

Comic-Con Museum Theater  
2131 Pan American Plaza

James S. Copley Auditorium  
San Diego Museum of Art  
1450 El Prado

Heikoff Giant Dome Theater  
Fleet Science Center  
1875 El Prado

Joan and Irwin Jacobs Theater  
Museum of Photographic Arts  
1649 El Prado

Natural History Museum auditorium  
(movies, lectures)  
1788 El Prado

Old Globe Theatre (3 stages)  
1363 Old Globe Way

San Diego High School (auditorium)  
1405 Park Blvd.

Starlight Bowl Amphitheater  
2005 Pan American Plaza

## **Museums, Art Galleries and Botanical Gardens**

### Downtown and Environs

Central Library Art Gallery  
330 Park Blvd.

Chicano Park Museum and Cultural  
Center  
1960 National Ave.

Crosby Park and Observation Pier/Cesar  
Chavez Park  
1440 Cesar E. Chavez Parkway

J.A. Cooley Museum (vintage  
automobiles)  
4233 Park Blvd.

Gaslamp Museum/Davis-Horton House  
410 Island Ave.

iN Gallery  
1878 Main St.

Maritime Museum of San Diego  
1492 N. Harbor Drive

Museum of Contemporary Art Downtown  
1100 Kettner Blvd.

New Children's Museum  
200 W. Island Ave.

Relics of the Hypnotist War  
340 16th St.

San Diego Aircraft Carrier (USS Midway)  
Museum  
937 N. Harbor Drive

San Diego Chinese Historical Museum  
404 Third Ave.

San Diego Firehouse Museum  
1572 Columbia St.

Villa Montezuma Museum  
1925 K St.

WNDR Museum  
422 Market St.

Women's Hall of Fame  
2323 Broadway  
SD 92102

### **Balboa Park**

Botanical Building  
1550 El Prado

Centro Cultural de la Raza  
2004 Park Blvd.

Comic-Con Museum  
2131 Pan American Plaza

Fleet Science Center  
1875 El Prado

House of Pacific Relations International  
Cottages  
2294 Pan American Plaza

Institute of Contemporary Art  
1439 El Prado

Japanese Friendship Garden  
2215 Pan American Road East

Marston House Museum  
3525 Seventh Ave.



Mingei International Museum (folk art)  
1439 El Prado

Museum of Photographic Arts  
1649 El Prado

Museum of Us  
1350 El Prado

San Diego Air & Space Museum  
2001 Pan American Plaza

San Diego Automotive Museum  
2080 Pan American Plaza

San Diego History Center  
1649 El Prado

San Diego Mineral & Gem Society  
1770 Village Place

San Diego Miniature Railroad Museum

1649 El Prado

San Diego Museum of Art  
1450 El Prado

San Diego Museum of Art Artists Guild  
1770 Village Place

San Diego Natural History Museum  
1788 El Prado

San Diego Zoo  
2920 Zoo Drive

Timken Museum of Art  
1500 El Prado

Veterans Museum and Memorial Center  
2115 Park Blvd.

World Beat Center  
2100 Park Blvd.

## Parks, Gardens, Plazas, Parks, Canyons, Open Space

### Downtown and Environs

Amici Park  
250 W. Date St.

Piazza de la Famiglia  
India at West Date Street

Barkyard  
100 Park Blvd. (J at 9th Ave.)

Ruocco Park  
585 Harbor Lane

Chicano Park  
1986 Logan Ave.

Tweet Street Park  
9th & Date

Children's Park  
326 W. Harbor Drive

Waterfront Park  
1600 Pacific Hwy.

Embarcadero Marina Park North and  
South  
400 Kettner Blvd., 200 Marina Park Way

### BALBOA PARK

Gallagher Square  
J St. at 9th Ave.

Alcazar Garden/House of Charm  
1439 El Prado

Gaslamp Quarter Pocket Park  
410 Island Ave.

Botanical Building  
1550 El Prado

Grant Hill Park  
2600 J St.

Casa del Rey Moro Gardens/House of  
Hospitality  
1549 El Prado

Horton Plaza Park  
900 Fourth Ave.

Coast Live-Oak Grove  
26th Street, north of Golden Hill Park

Lane Field Park  
1009 N. Harbor Drive

Craig Noel Garden/ Old Globe Theatre  
1363 Old Globe Way

Martin Luther King Promenade  
326 W. Harbor Drive

Desert Garden  
North of footbridge over Park Blvd at El  
Prado

Olive Park  
3rd at Quince

EthnoBotany Children's Peace Garden  
World Beat Center  
2100 Park Blvd.

Pantoja Park  
512 W. G St

Florida Canyon  
Florida Drive

Golden Hill Park  
2532 Golden Hill Drive

Inez Grant Memorial Rose Garden  
Park Blvd at El Prado

Japanese Friendship Garden  
2215 Pan American Road East

Juniper Canyon Open Space  
3300 Juniper St.

Kate Sessions Cactus Garden  
2144 W. Pan American Road

Maple Street Canyon  
3rd Ave. and Quince St.

Marston House Garden  
3525 7th Ave.

Palm Canyon  
South of House of Charm parking lot

Pound Canyon  
State Route 163 at B St.

Franklin D. Roosevelt Memorial Grove  
Balboa Drive, south of Upas.

Switzer Canyon  
2800 Maple St.

Trees for Health Garden  
Balboa Drive at Quince St.

Zoro Garden/Casa de Balboa  
1649 El Prado

## Recreational Venues

### Downtown and Environs

Firehouse Swing Dance Club  
2557 Third Ave.

Embarcadero Marina Park South  
Basketball courts  
200 Marina Park Way

Petco Park  
100 Park Blvd.

### Balboa Park

Balboa Park Activity Center  
2145 Park Blvd.

Balboa Chess Club  
2225 6th Ave.

Balboa Park Golf Course  
2600 Golf Course Drive

Bird Park  
28th St. at Thorn St.

Birds Nest/Tiny Tots Lot  
Pershing Drive at Pershing Ave.

Blind Community Center  
1805 Upas St.

Boys Scouts  
1207 Upas St.

Camp Fire Girls Camp  
3101 Balboa Drive

Cypress Grove picnic area  
Quince Street at Balboa Drive

War Memorial Bldg.  
3325 Zoo Drive

Girl Scouts  
1231 Upas St.

Golden Hill Recreation Center  
2600 Golf Course Drive

Grape Street Dog Park and picnic area  
28th at Grape st.

Morley Field Sports Complex  
2221 Morley Field Drive

- Archery Target Range (north of golf course)
- Balboa Tennis Club, Jacaranda Place at Alabama Street
- Maureen Connolly (tennis) Stadium at tennis club
- City College Baseball field (southwest of archery range)
- Bocce Courts, Pershing Ave. at Upas St.
- Petanquedrome (east of Kearns Pool)
- Bocce Courts (Upas at Jacaranda Place)
- Disc Golf course (north of archery range)
- Lease-free dog area (southwest of tennis courts)
- Fitness Course (two miles, 18 exercise stations) across parking north of tennis courts)
- Morley Field Fliers miniature airport (Pershing Drive at Florida Canyon Drive near velodrome)
- Morley Field athletic fields (softball, baseball, soccer, rugby) (south of tennis and pool)
- Sandieson Seniors Center (east of pool, north of ballfields) clubs building

- Tiny Tot play area (between pool and ballfields)
- Velodrome racing bike track (west of ballfields)

Municipal Gymnasium  
2111 Pan American Plaza

Pepper Grove playground  
Park Blvd. at Wieber Ave. (east of Centro Cultural de la Raza)

Redwood Bridge Club  
3111 6th Ave.

San Diego Lawn Bowling  
El Prado at Balboa Drive

Sixth Avenue playground  
6th at Thorn St.

Southern California Association of  
Camera Clubs  
1780 Village Place

Nate's Point Dog Park  
El Prado at Balboa Drive