

# SKYLINE-PARADISE HILLS COMMUNITY PLANNING COMMITTEE

Meeting Location: Paradise Hills Recreation Center - 6610 Potomac Street, San Diego, CA 92139

## PUBLIC NOTICE and AGENDA

July 14, 2015, 7:00-9:00 p.m.

This Planning Group covers the neighborhoods of *Skyline Hills, Paradise Hills, South Bay Terraces, North Bay Terraces, Lomita and Jamacha.*

	TIME	DESCRIPTION
		<i>Times assigned for each item are approximate. The order of agenda items may be modified at the beginning of the meeting at the discretion of the Chair.</i>
	6:00	Pre-meeting: correspondence review; infrastructure list; election planning.
1.	7:00	Call to Order / Introductions
2.		Non-agenda Public Comment - 2 minutes per issue
3.		Modifications to the Agenda
4.	7:10	Approval of the Minutes of May, 2015
5.		Treasurer's Report: \$336.01 on account
6.	7:15	<b>Reports to the Committee</b> a. Fire/Police b. City/County/State c. Community Planners Committee
7.	7:30	<b>INFORMATION ITEMS</b> a. Sewer Group Job 743 - Jamacha Rd. b. Project 396652 Hopkins St residence.
8.	8:05	<b>ACTION ITEMS</b> a. Project 388161, CUP - T-Mobile faux tree at Penn Athletic Field. b. Project 402780 Sprint Skyline Police Dept
9.	9:00 p.m.	Adjourn to next regular meeting, August 11, 2015.

*"We are fighting for things that make these homes worthwhile; a yard big enough to raise a garden; a paved street in front; sidewalks to walk on; sewers that don't stop up; garbage cans emptied weekly; decent playgrounds for the children; a tax bill we can afford to Pay." - Harley Knox*

LOCATION MAP

SEWER GROUP 743

(Map 10 OF 10)

SENIOR ENGINEER  
WENDY GAMBOA

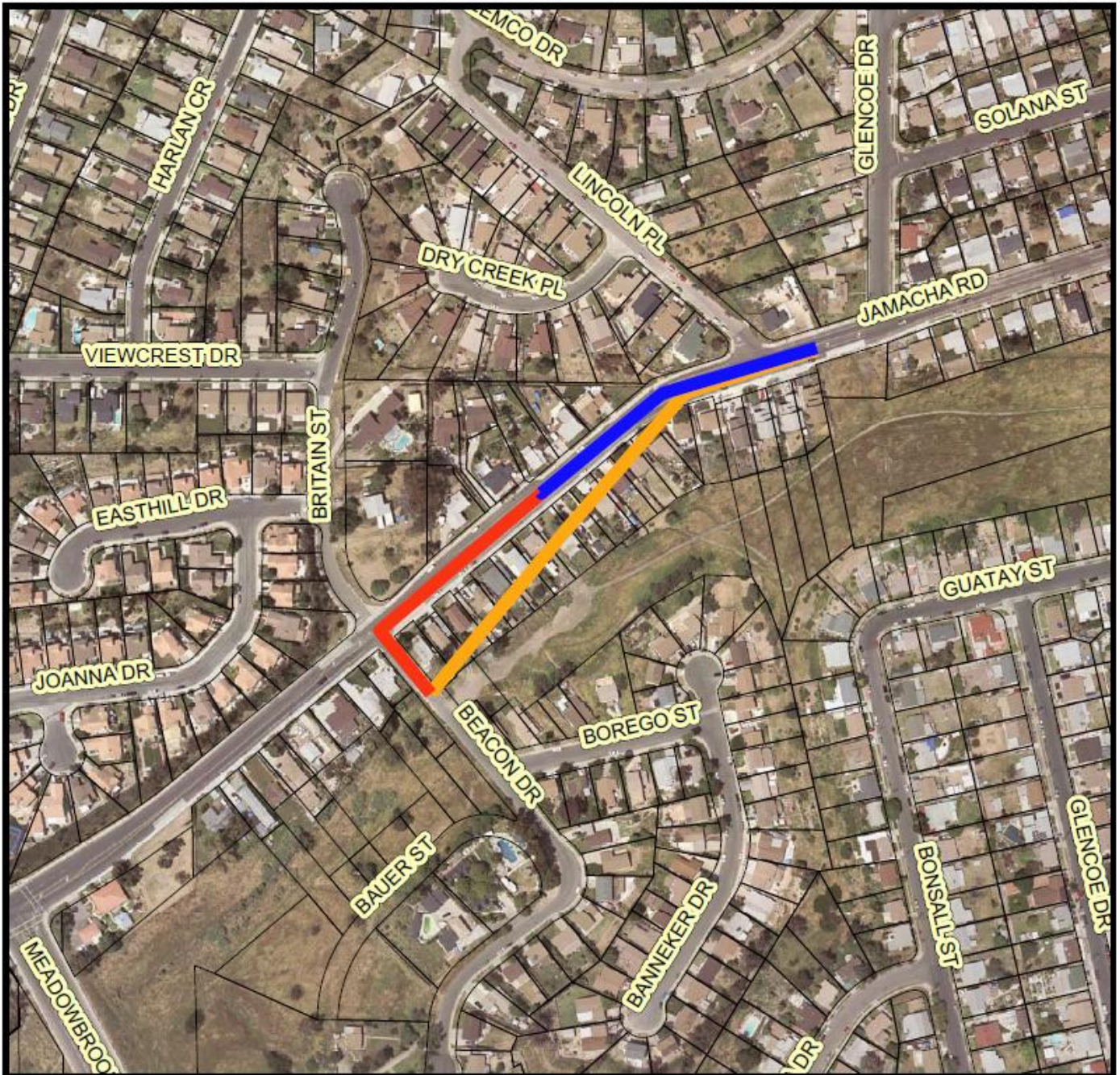
PROJECT MANAGER  
DAN TITTLE

PROJECT ENGINEER  
FRANCIS MARQUEZ

CONSTRUCTION PROJECT  
INFORMATION  
(619) 533-4207



Right Of Way Division



LEGEND

- NEW SEWER MAIN
- SEWER 743 REPLACE-IN-PLACE
- SEWER ABANDONMENT



No Scale



THIS MAP/DATA IS PROVIDED WITHOUT WARRANTY OF ANY KIND, EITHER EXPRESS OR IMPLIED, INCLUDING, BUT NOT LIMITED TO, THE IMPLIED WARRANTIES OR MERCHANTABILITY AND FITNESS FOR A PARTICULAR PURPOSE. Note: This product may contain information reproduced with permission granted by RAND McNALLY & COMPANY to SanGIS. This map is copyrighted by RAND McNALLY & COMPANY. It is unlawful to copy or reproduce all or any part thereof, whether for personal use or resale, without the prior, written permission of RAND McNALLY & COMPANY.