

SKYLINE-PARADISE HILLS COMMUNITY PLANNING COMMITTEE

Meeting Location: Paradise Hills Recreation Center - 6610 Potomac Street, San Diego, CA 92139

PUBLIC NOTICE and AGENDA

May 12, 2015, 7:00-9:00 p.m.

This Planning Group covers the neighborhoods of *Skyline Hills, Paradise Hills, South Bay Terraces, North Bay Terraces, Lomita and Jamacha.*

	TIME	DESCRIPTION
		<i>Times assigned for each item are approximate. The order of agenda items may be modified at the beginning of the meeting at the discretion of the Chair.</i>
	6:00	Pre-meeting: correspondence review; infrastructure list; election planning.
1.	7:00	Call to Order / Introductions
2.		Non-agenda Public Comment - 2 minutes per issue
3.		Modifications to the Agenda
4.	7:10	Approval of the Minutes of April, 2015
5.		Treasurer's Report: \$336.01 on account
6.	7:15	Reports to the Committee a. Fire/Police b. City/County/State c. Community Planners Committee
7.	7:30	INFORMATION ITEMS a. School zone traffic controls: committee preferences.
8.	8:05	ACTION ITEMS a. Project 417624, Martinez - Street Vacation. Public vacation of an existing 10' wide alley adjacent to 5841 & 5845 Calle Casas Bonita. b. Conditional Use Permit for Off-site alcohol sales at 8450 Jamacha Road.- <i>Cortés Communications, LLC</i>
9.	9:00 p.m.	Adjourn to next regular meeting, June 9, 2015.

"We are fighting for things that make these homes worthwhile; a yard big enough to raise a garden; a paved street in front; sidewalks to walk on; sewers that don't stop up; garbage cans emptied weekly; decent playgrounds for the children; a tax bill we can afford to Pay." - Harley Knox

EXHIBIT "B"

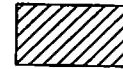
REFERENCES

() RECORD DATA PER PARADISE HILLS UNIT NO. 3, MAP NO. 2101, APRIL 2, 1928. SDCR.

BASIS OF BEARING

ALL DIMENSIONS AND BEARINGS SHOWN HEREON ARE PER RECORD, PARADISE HILLS UNIT NO. 3, MAP NO. 2101, APRIL 2, 1928. SDCR.

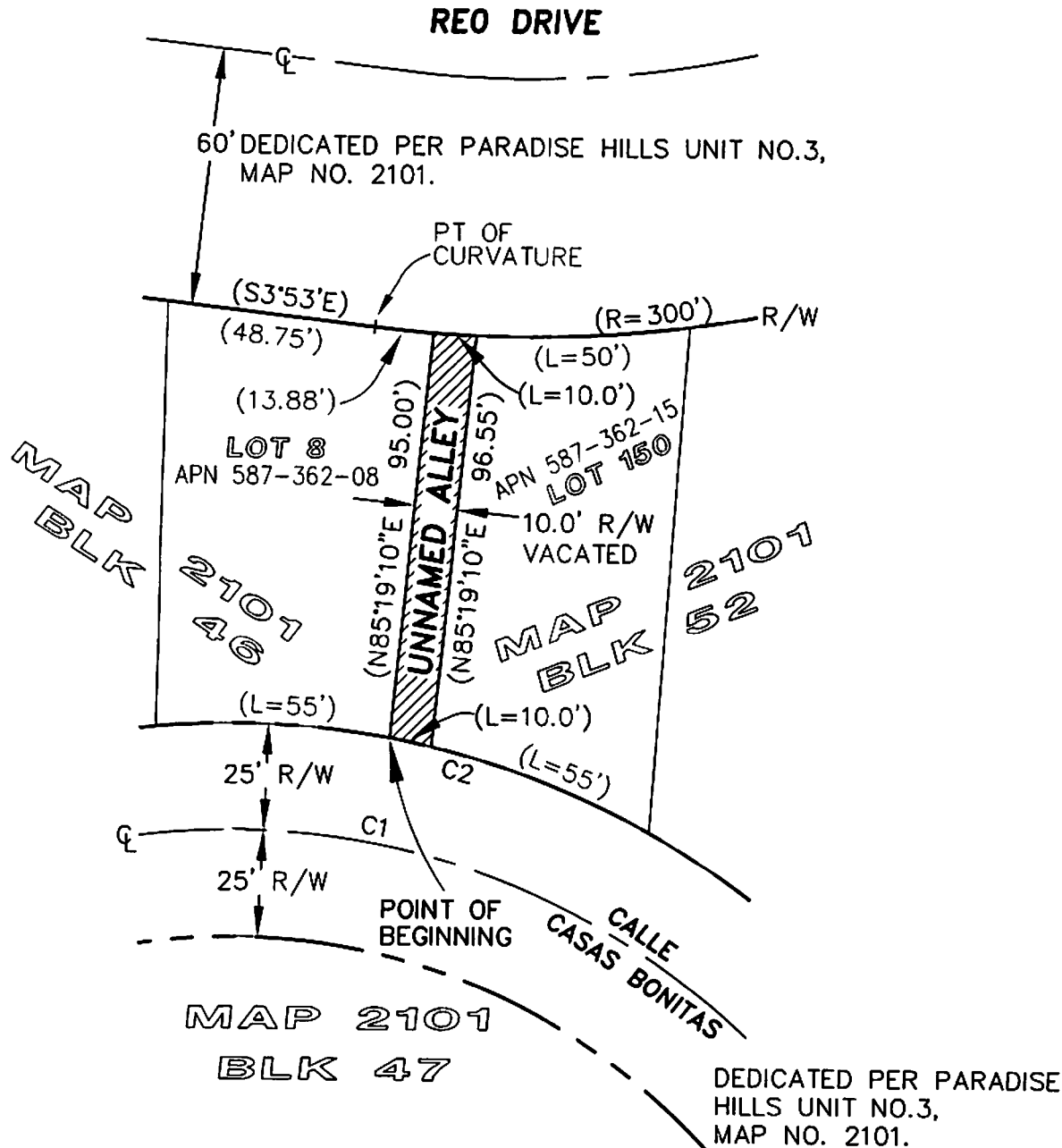
LEGEND



PUBLIC ALLEY VACATED

AREAS

PUBLIC ALLEY ESMT 957.46 SF OR 0.02 ACRES, MORE OR LESS.

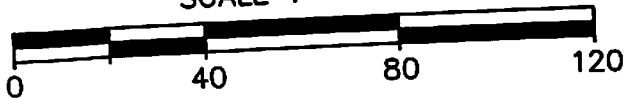


N

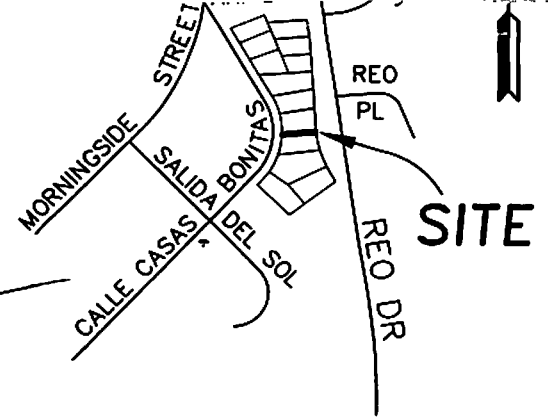
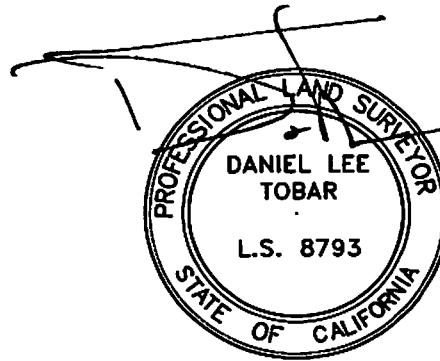




SCALE 1" = 40'



CURVE TABLE, RECORD DATA			
CURVE	LENGTH	RADIUS	DELTA
C1	228.75	175.00	74°53'40"
C2	261.43	200.00	74°53'40"



VICINITY MAP
NO SCALE

TOBAR ENGINEERING
 DANIEL TOBAR, P.E., L.S.
 15910 CUMBERLAND DR
 POWAY, CA 92064
 PH: 858.486.7210
 E-MAIL: tobareng@cox.net

**STREET VACATION OF UNNAMED PUBLIC ALLEY
 BETWEEN LOT 150, BLOCK 52, AND LOT 8, BLOCK 46 OF MAP 2101**

DESCRIPTION	BY	APPROVED	DATE	FILMED	CITY OF SAN DIEGO, CALIFORNIA	I.O.
ORIGINAL					SHEET 1 OF 1 SHEETS	PTS _____
					_____	CCS. 1824-6312
					FOR CITY ENGINEER	NAD 83 COORDINATES
					_____	L.C. 183-1750
						LAMBERT COORDINATES
						-B